

PORTFOLIO

MADE By Jo Jong-in
GreenComputerArt NCS Curriculum
Start,2015.03.07 End,2015.07.01



INDEX

Remodeling

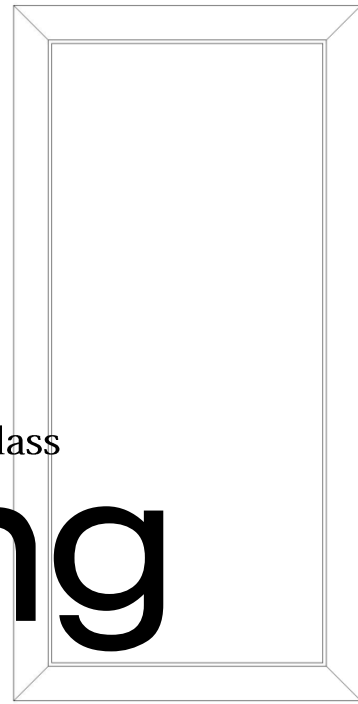
- For Homeclass

Reproducing

- The Mad House' s kichen
- The Reception for children space
- The

House remodeling for flowercake homeclass

ReModeling



ReModeling

Client Analysis

1
Environment
Analysis

WHO. “플라워케이크 강사, 동시에 주부”

WHY. “자택에서의 홈클래스 진행 계획”

2
Alternatives
Selection

수업공간 확보
넉넉한 수납공간

타가족구성원의
사생활 보호

신속한 공사
합리적 비용

3
Solution

NEEDS

DEMANDS



Job Analysis



“각지, 볼, 팁, 색소, 주걱, 계량도구, 작은 가전기기” “NO 화력, NO 큰 기기”

➔ 주로 작은 크기, 경량의 소도구들 수납 多



“다양한 컬러, 다양한 꽃,”

➔ 1인당 비교적 넓은 작업 공간 필요

ReModeling

Space Analysis

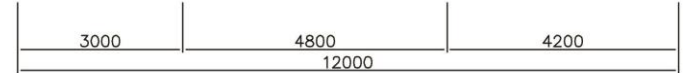
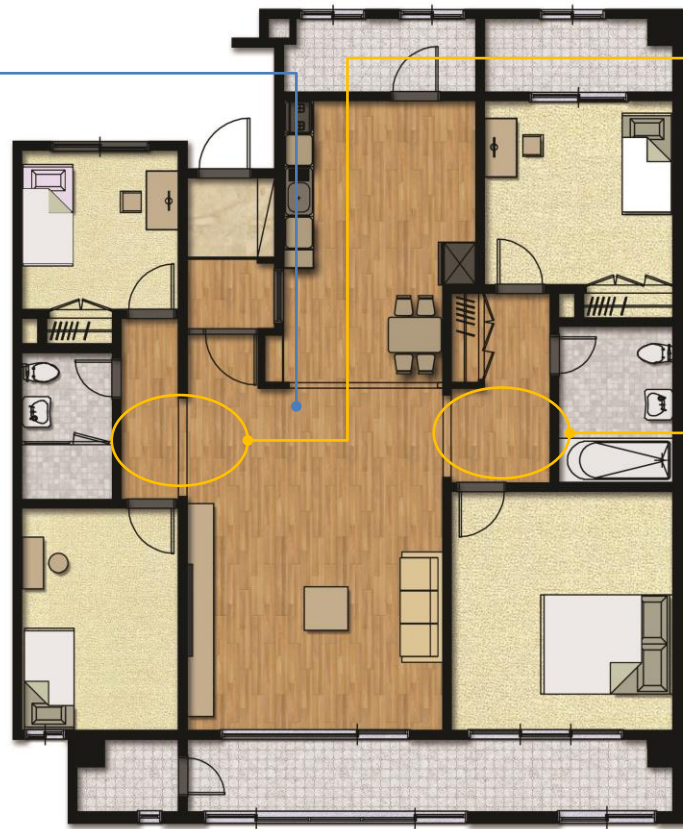
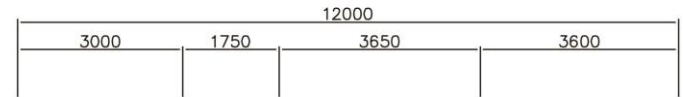
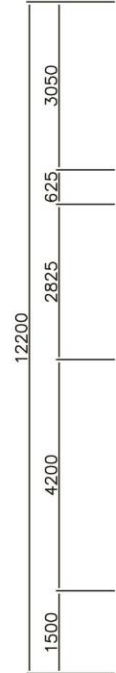
1 Environment Analysis

2 Alternatives Selection

3 Solution

Space:

- 주방과 일렬로 연결된 거실
- 방 4ea
- 화장실 2ea
- 베란다 Front-back



Feature:

거실과 방 사이의 전실 각각 존재
공간 비중 큰 거실 겸 주방
방 크기가 대체적으로 유사

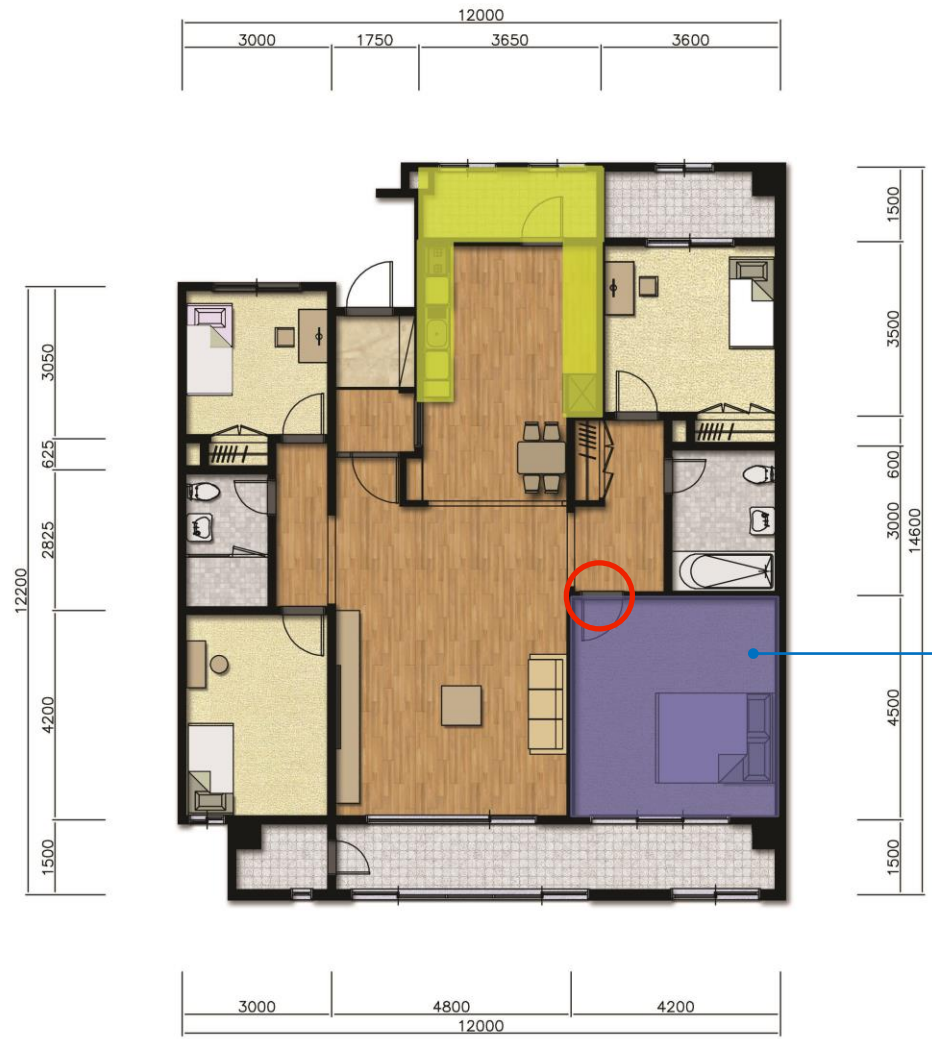


Alternative A. Give a space

1 Environment Analysis

2 Alternatives Selection

3 Solution



- ✓ 수업공간 확보
- ✓ 수납공간 확보
- ✓ 생활공간과의 분리



- 비효율적 동선

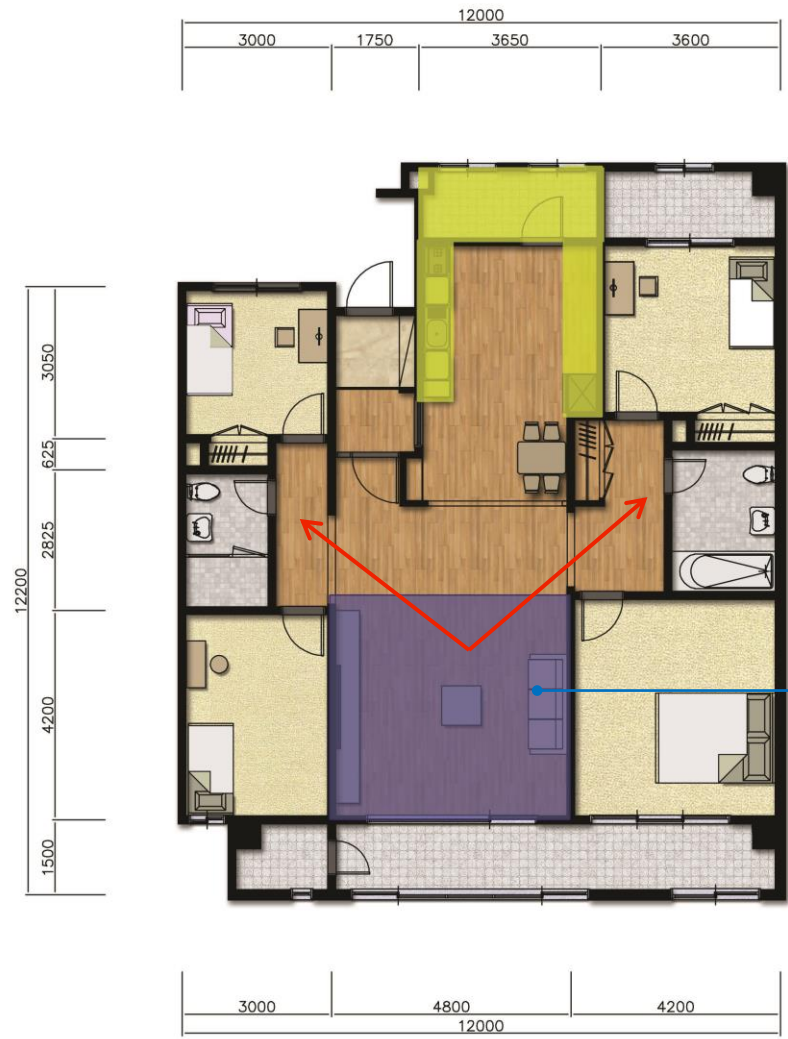
Class Room
Division of work place

Alternative B. Share a space

1
Environment
Analysis

2
Alternatives
Selection

3
Solution



- ✓ 수업공간 확보
- ✓ 수납공간 확보
- ✓ 효율적 동선



- 생활공간과 분리문제

Class Room
& Living Room
1 Space 2 Function

Alternative Comparison Analysis : Sameness&Differences

1
Environment
Analysis

2
Alternatives
Selection

3
Solution



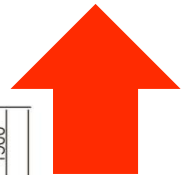
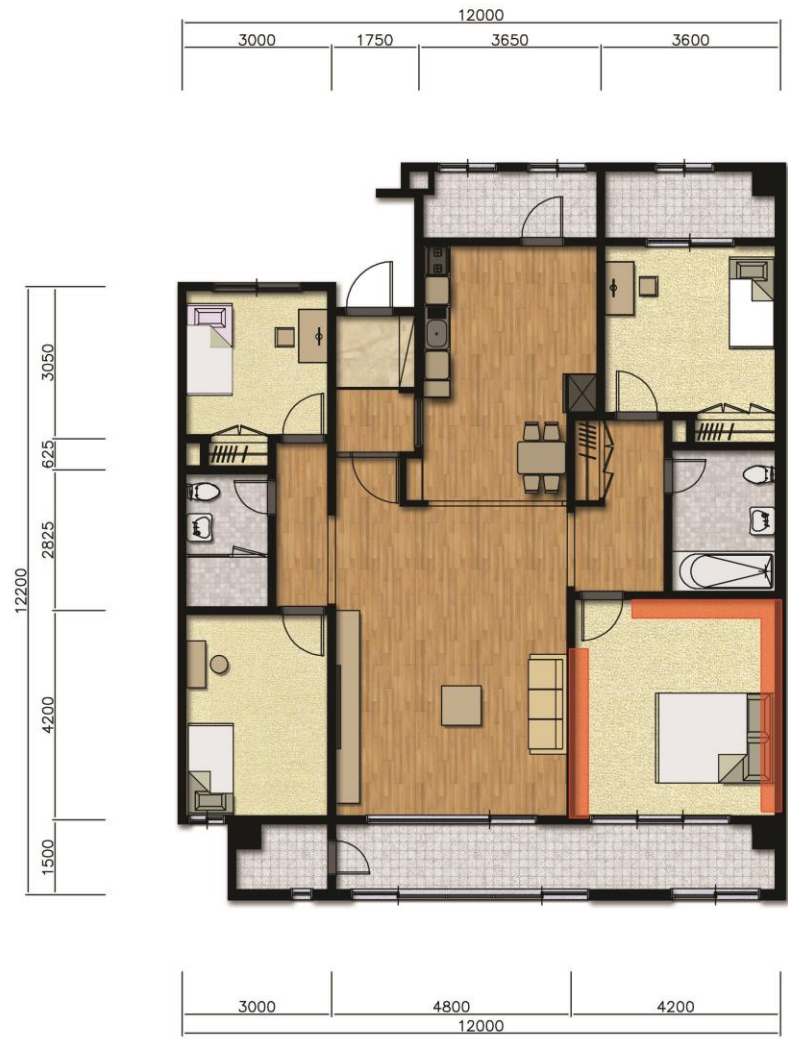
- ✓ The Extension of Kitchen Cabinet
- ✓ Wide Storage



- ✓ B. Privacy problem
- ✓ A. Moving Line problem

Alternative Development. Alternative 1

- 1 Environment Analysis
- 2 Alternatives Selection**
- 3 Solution

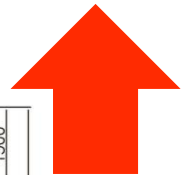
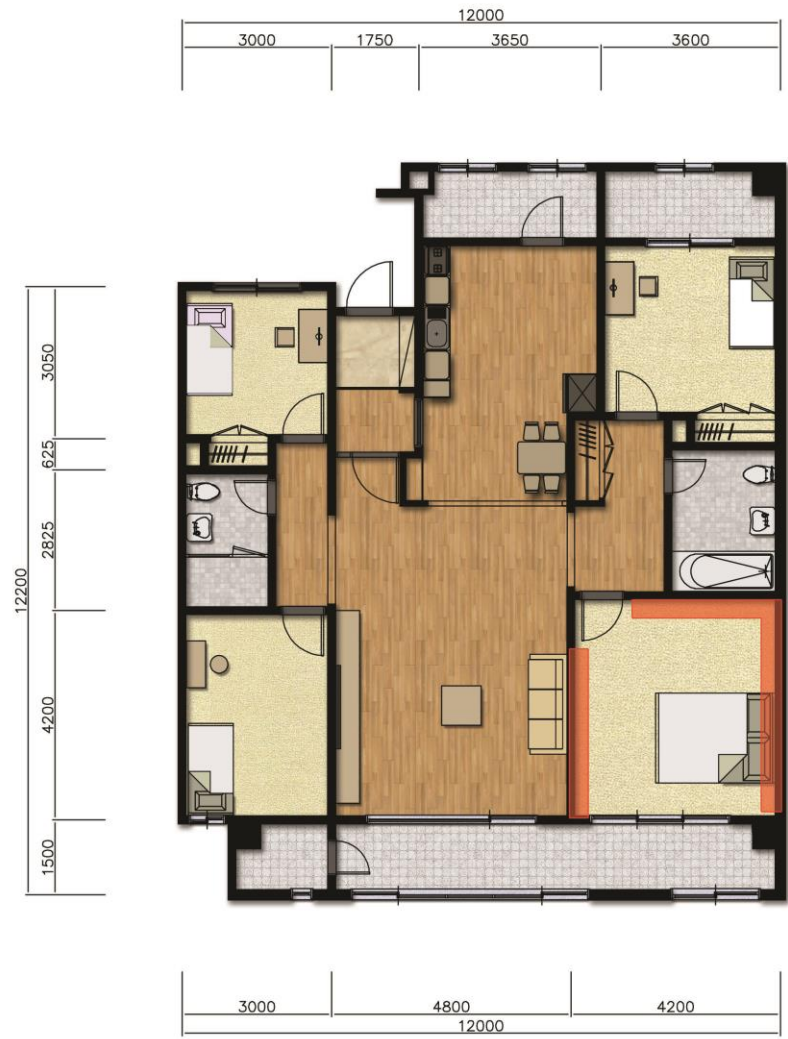


“Make a Storage in the Room”

- + 길어진 동선 문제 어느 정도 커버 가능
- 수업 공간이 줄어듦

Alternative Development. Alternative 2

- 1 Environment Analysis
- 2 Alternatives Selection**
- 3 Solution



“Jekyll and Hyde
- Sliding Door”

- + 생활 공간과 수업공간의 분리
- + 수업 공간의 확장 효과
- + 추가적인 확장 필요시 사용자 이용 편리



ReModeling

Client Analysis

Alternative Selection 2. Share a space

1
Environment
Analysis

2
Alternatives
Selection

3
Solution



The mad house's kitchen. Reception for children space. Exterior [체육관]

Reproducing



The mad house's kitchen

The Warm, Unniquie Kitchen

Reproducing

1
Site

2
Reason for
selection

3
View

Location:

Vancouver, BC

Status:

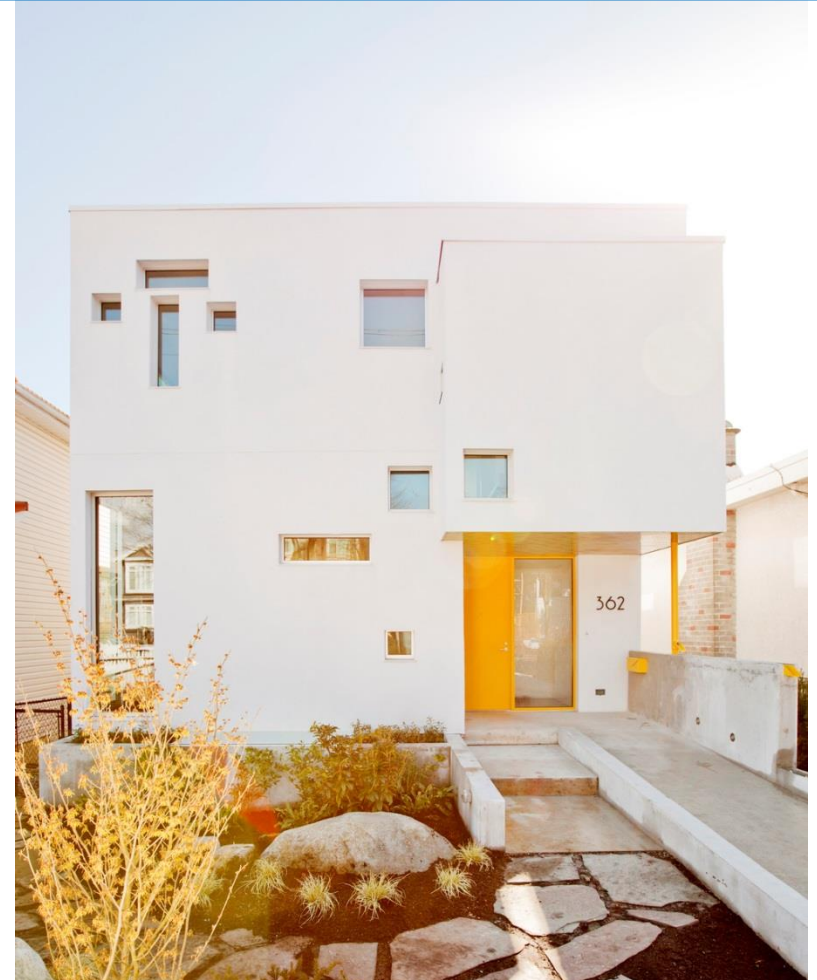
Completed 2014

Architecture:

marianne amodio architecture studio

General Contractor:

Novell Design Build.



The Warm, Unnique Kitchen

Reproducing

1
Site

2
Reason for
Selection

3
Solution

Main Material:

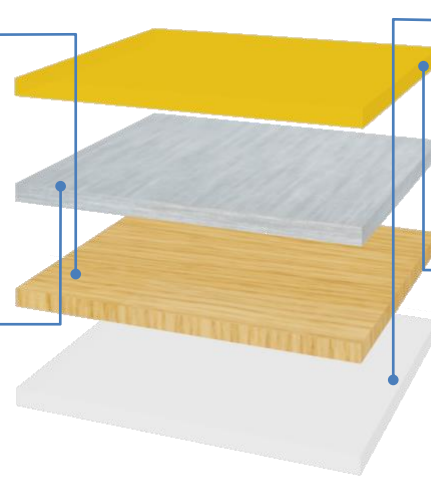
Variety of WOOD

Cupboard. Sink.
Cooking table. Louver.
Dining table. Chair.

Sub Material:

Metal

Cupboard. Sink.
Cooking table. Louver
Oven. REF. etc.



Main Color:
WHITE

Wall. Ceiling. Louver

Sub Color:
Yellow

Door

The mad house's kitchen

The Warm, Unniquie Kitchen

Reproducing

- 1 Site
- 2 Reason for Selection
- 3 View



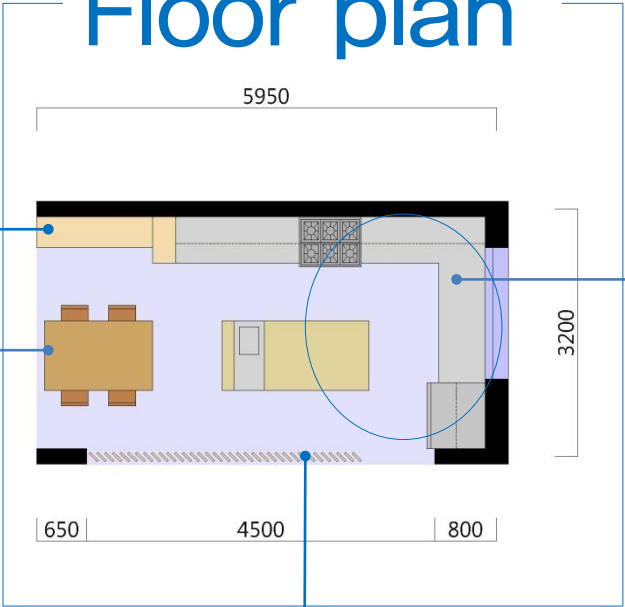
Decoration chest
Division kitchen and living room



Cup board
Sliding door



Floor plan



Dining table set
Variety of woods



Louver
Separation Effect

Sliding door

Rhythm, light

Be well-lighted

Color point

Oven&Gas

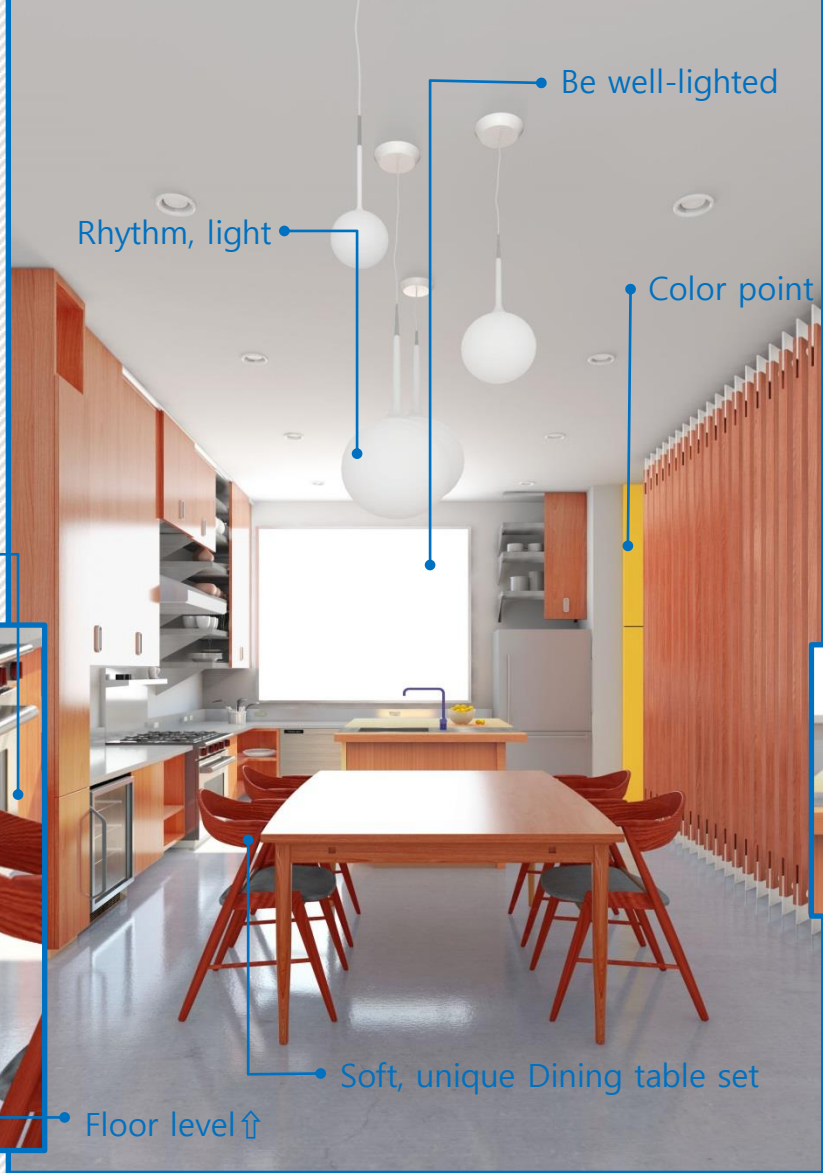
Wine R.E.F

Louver

Wide cooking table

Soft, unique Dining table set

Floor level ↑



The family box's Reception

First Impression, Reception

Reproducing

1
Site

2
Reason for
selection

3
View



Architects: SAKO Architects

Location: Beijing, China

Architect In Charge: Keiichiro SAKO, Kumiko Fukasawa

Project Year: 2013

General Contractor: Shenzhen Weiye Decoration Group

First Impression, Reception

Reproducing

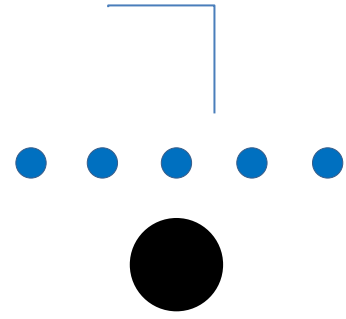
- 1 Site
- 2 Reason for Selection
- 3 Solution

NEW



Fear
panic

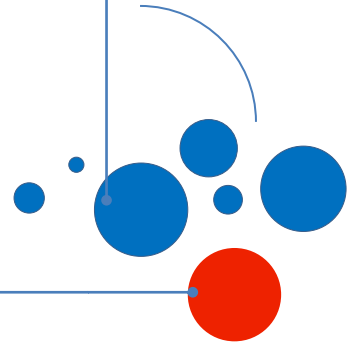
Curiosity
interest



날카로움. 긴장감.
정적. 경직. 정지
질서. 규칙적



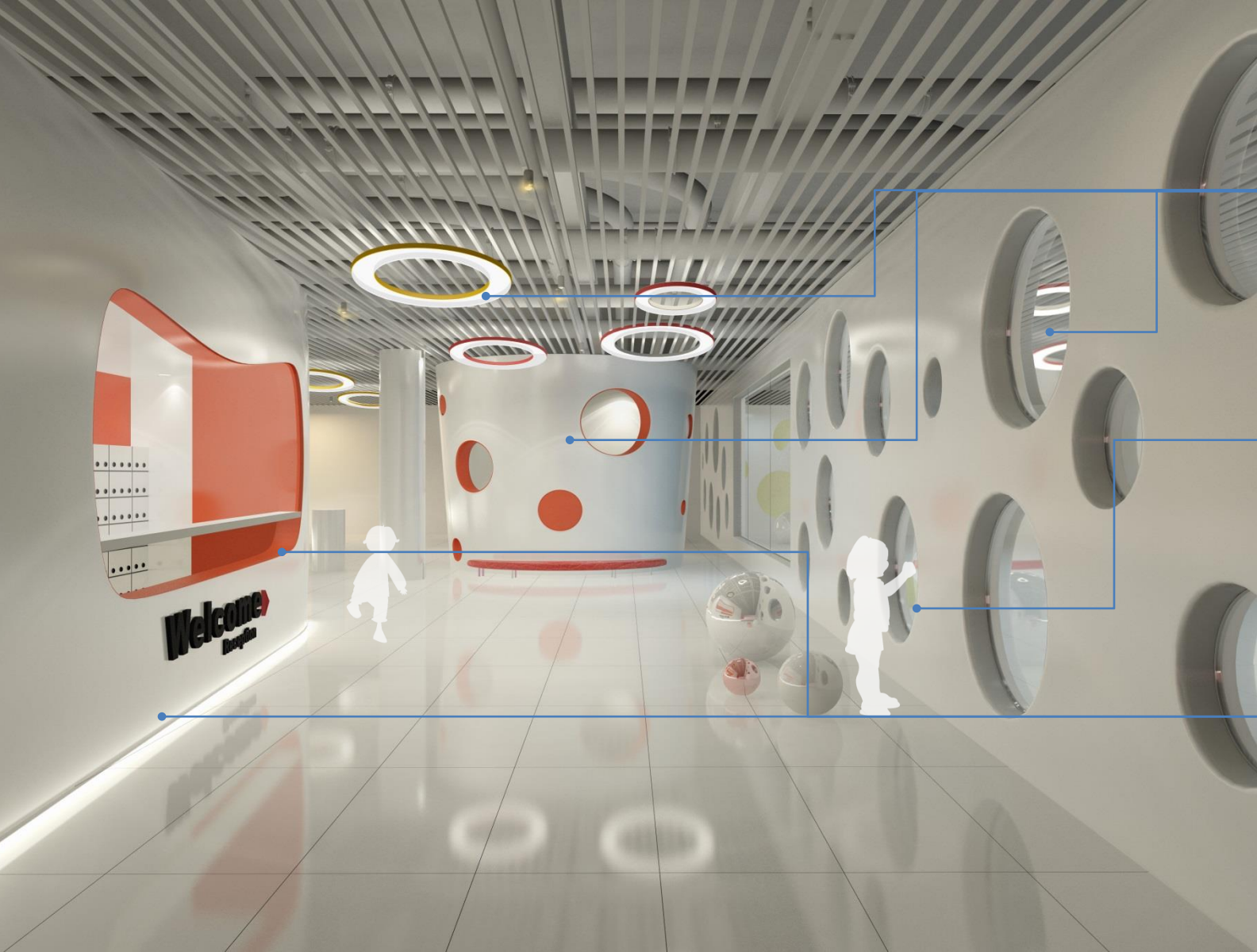
Main Shape:
Circle



Point Color:
Red



부드러움. 편안함.
동적. 활동적.
운동성. 자유로움.



- . Asymmetric balance
- . Rhythm
- . Dynamic



- . Curiosity
- . Interest
- . A new angle



- . Accessible
- . Not sharp
- . Comfortable

Na Skarpie's Exterior

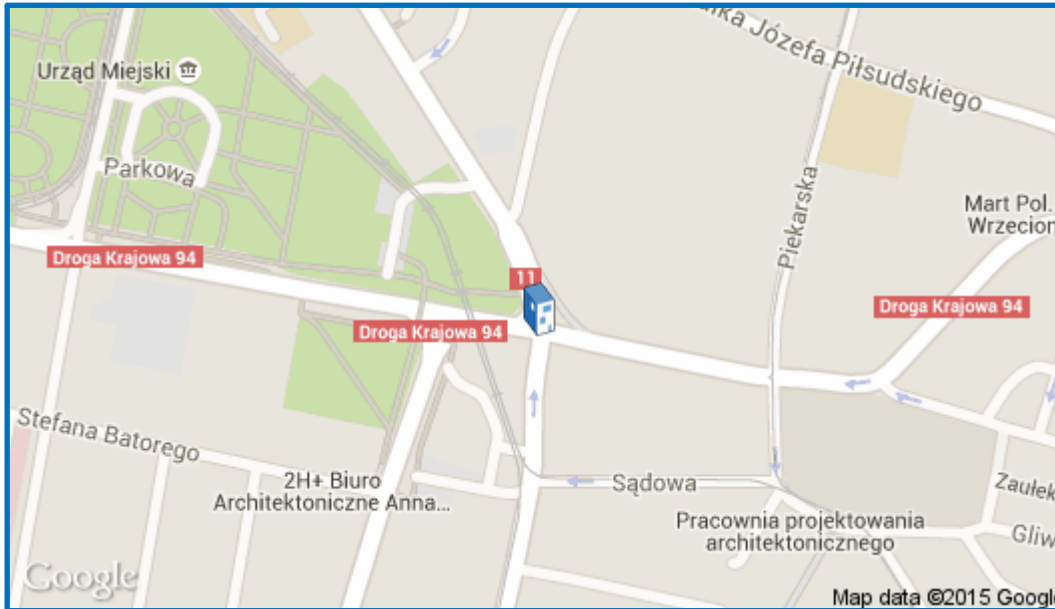
Sports And Show Hall Na Skarpie

Reproducing

1
Site

2
Reason for
selection

3
View



Location: Bytom, Poland

Architects: Maćków Pracownia Projektowa

Architect In Charge: Zbigniew Maćków
Bartłomiej Witwicki, Agata Kowalczyk, Elias
Matuła, Magdalena Paprotna, Zuzanna Wojtasiak

Project Year: 2010

Structure: GP Konstruktor

Sports And Show Hall Na Skarpie

Reproducing

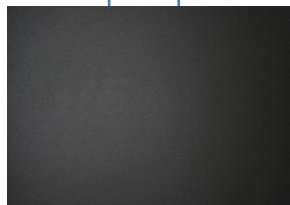
1 Site

2 Reason for Selection

3 Solution

Main Material:
Zink Panel
Finishing Material

Main Color:
Navy
Strong



Sub Material:
Glass
Window. Door

Exterior Shape
Straight&Diagonal line
Dinamic, Strong, Open





Strong

.unity .Vertical line

Dinamic, Sporty

.diagonal line